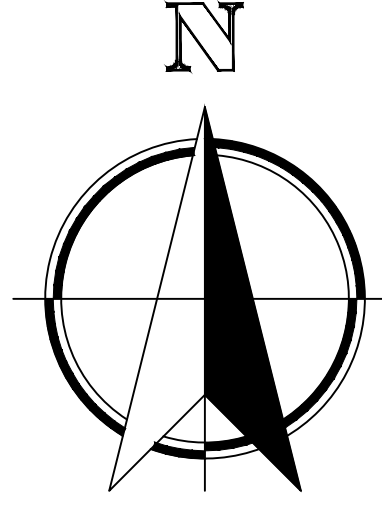


HOOSIER CREEK DRAINAGE DISTRICT (FARM NO. 5) MAPPING AND BENEFITS ASSESSMENT

for
**RACINE COUNTY
BOARD OF DRAINAGE COMMISSIONERS**



Nielsen Madsen & Barber S.C.
Civil Engineers and Land Surveyors
1458 Horizon Boulevard, Suite 200, Racine, WI 53406
Tel: (262)634-5588 Fax: (262)634-5024
Website www.nmbasc.net



Sheet Index

Plan Sheet	Sheet No.
COVER SHEET	1 OF 5
DISTRICT MAP - NORTHEAST QUARTER	2 OF 5
DISTRICT MAP - SOUTHEAST QUARTER	3 OF 5
DISTRICT MAP - NORTHWEST QUARTER	4 OF 5
DISTRICT MAP - SOUTHWEST QUARTER	5 OF 5

HOOSIER CREEK DISTRICT PARCEL
& AREA BREAKDOWN

TOWN	PARCELS	AREA (AC)
TOWN OF BURLINGTON	266	5,035
TOWN OF DOVER	146	2,621
TOWN OF BRIGHTON	120	4,746
TOTAL	532	12,402

HOOSIER CREEK DITCH
& TILE LENGTHS

BRANCH	DITCH (FT)	TILE (FT)
MAIN HOOSIER CREEK	45,586	-
BRANCH 2	12,328	-
BRANCH 3	-	5,772
BRANCH 4	5,811	3,960
BRANCH 5	6,586	1,291
BRANCH 6	-	1,410
BRANCH 7	-	3,946
BRANCH 8	6,255	6,870
BRANCH 8A	-	4,896
BRANCH 9	-	4,595
BRANCH 10	4,107	2,448
BRANCH 10 EAST	-	4,870
BRANCH 11	6,711	3,187
BRANCH 12	8,971	6,242
TOTAL	96,355	49,487

LEGEND

- MUNICIPAL BOUNDARY — — — — —
- HOOSIER CREEK DISTRICT BOUNDARY - - - - -
- HOOSIER CREEK TILE OR PIPE WITH DIAMETER — 18 —
- PARCEL NUMBER WITH ACREAGE 30-023-000
6.0 AC
- TRUNCATED PARCEL WITH TOTAL 30-023-000
6.0 AC
- ACREAGE AND ACREAGE WITHIN DISTRICT (0.2 AC)

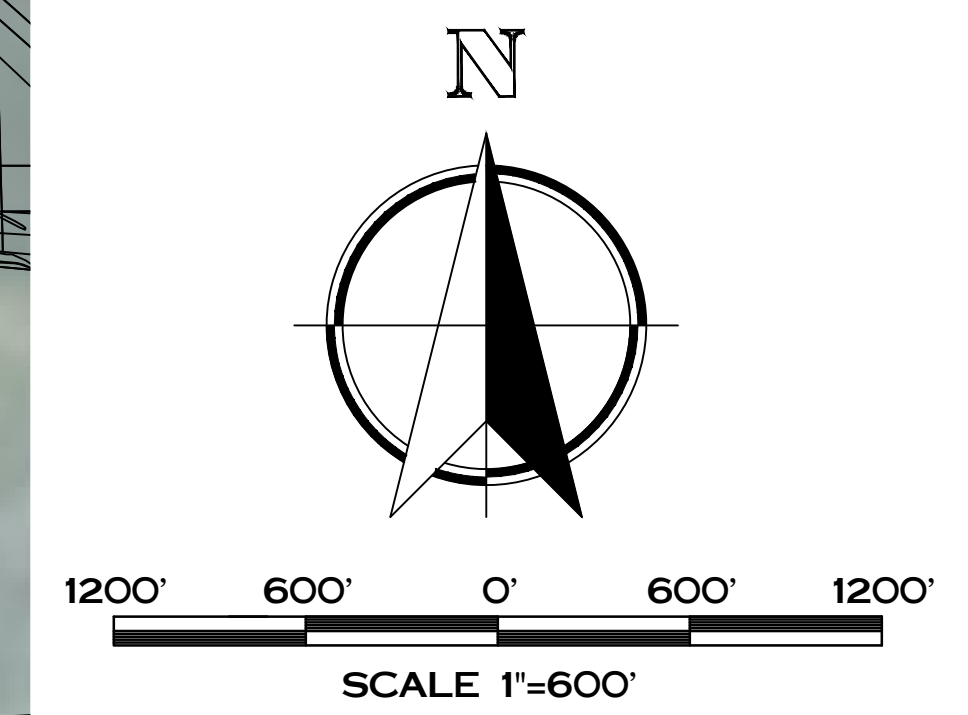
NOTE
TILE LOCATIONS WERE NOT FIELD LOCATED. THE TILE LOCATIONS, AS SHOWN, WERE IMPORTED FROM THE EXISTING FARM DRAINAGE MAP.



**RACINE COUNTY BOARD OF
DRAINAGE COMMISSIONERS
HOOSIER CREEK DRAINAGE
DISTRICT (FARM NO. 5)**

NO.	REVISION	DATE

PROJ. MGR: MRM
DRAFTED: ICB
DATE: 2-28-2012
CHECKED: ---
DATE: ---
2012.0008.01
SHEET
1 OF **5**



LEGEND

MUNICIPAL BOUNDARY ————

HOOSIER CREEK DISTRICT BOUNDARY - - - - -

HOOSIER CREEK TILE OR PIPE WITH DIAMETER $\frac{18}{18}$

PARCEL NUMBER WITH ACREAGE 30-023-000
6.0 AC

TRUNCATED PARCEL WITH TOTAL ACREAGE AND ACREAGE WITHIN DISTRICT 30-023-000
6.0 AC
(0.2 AC)

NOTE

TILE LOCATIONS WERE NOT FIELD LOCATED. THE TILE LOCATIONS, AS SHOWN, WERE IMPORTED FROM THE EXISTING FARM DRAINAGE MAP.



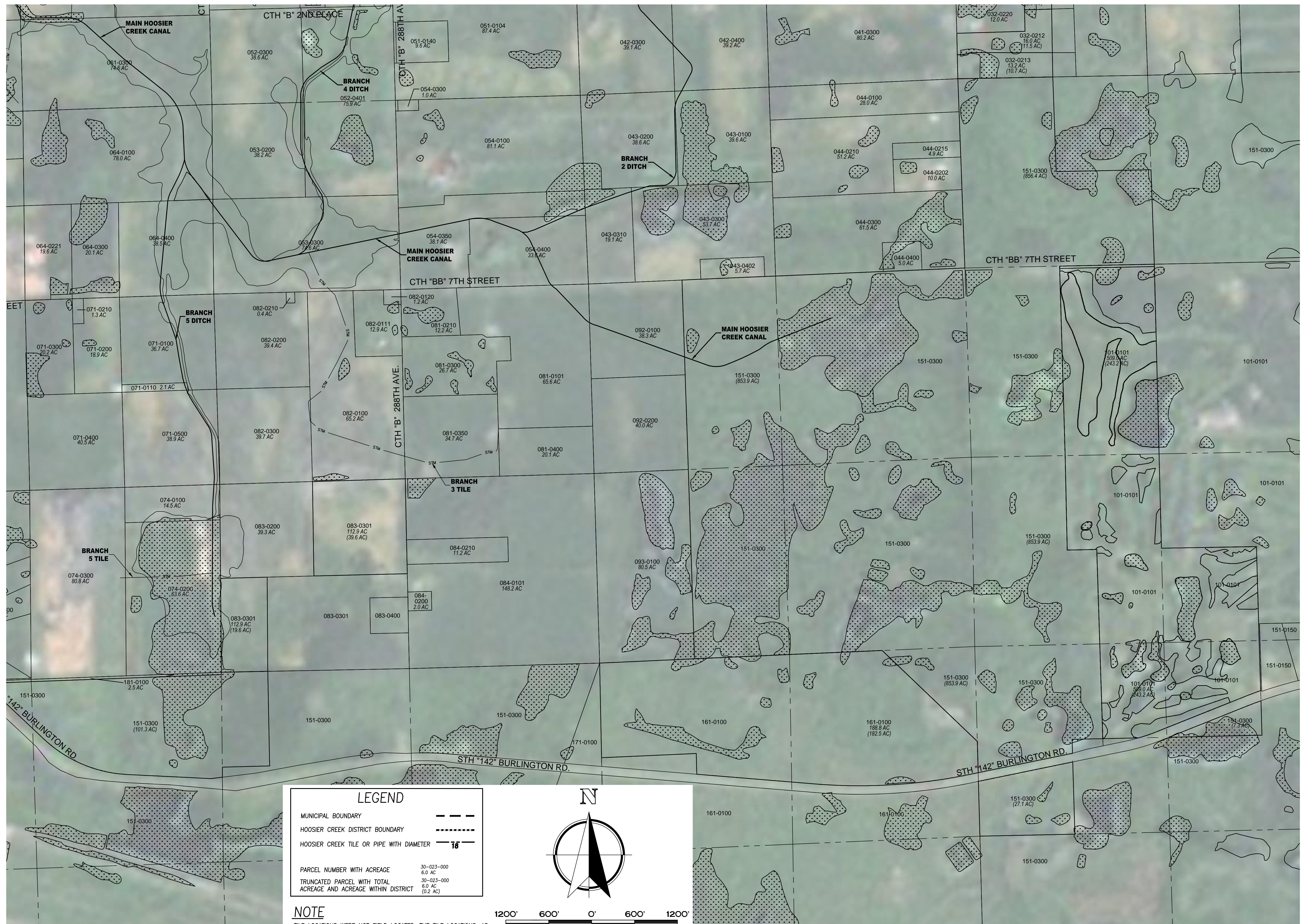
Nielsen Madsen & Barber S.C.
Civil Engineers and Land Surveyors
1458 Horizon Boulevard, Suite 200, Racine, WI 53406
Tel: (262)634-5588 Fax: (262)634-5024
Website www.nmbssc.net

**RACINE COUNTY BOARD OF DRAINAGE COMMISSIONERS
HOOSIER CREEK DISTRICT (FARM NO. 5)
NORTHEAST DISTRICT QUARTER**

NO.	REVISION	BY	DATE

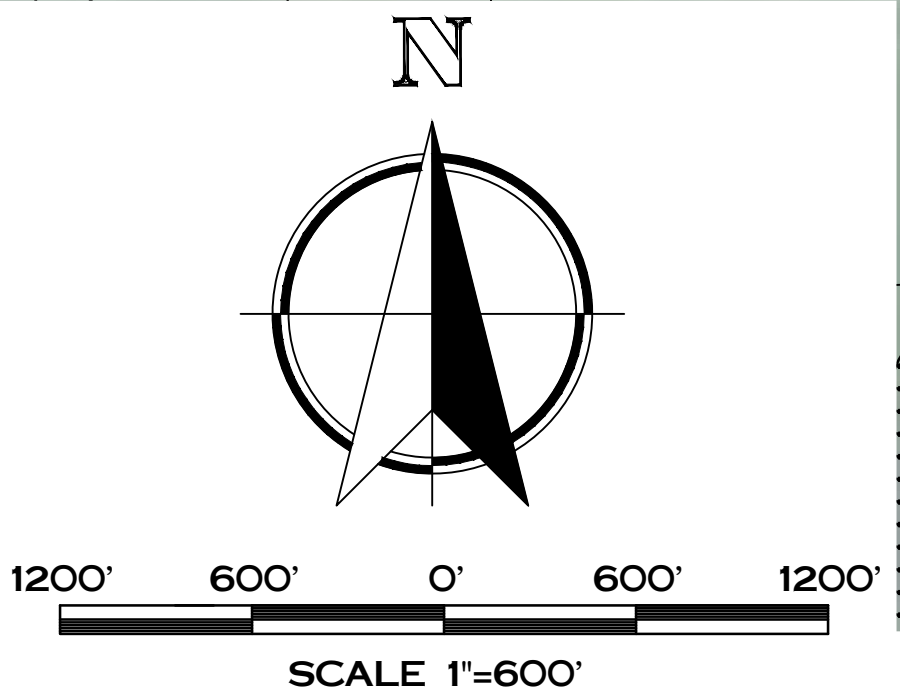
PROJ. MGR: MRM
DRAFTED: ICB
DATE: 2-28-2012
CHECKED: ---
DATE: ---

Tuesday, June 26, 2012 12:58:22 PM



LEGEND	
MUNICIPAL BOUNDARY	---
HOOSIER CREEK DISTRICT BOUNDARY	----
HOOSIER CREEK TILE OR PIPE WITH DIAMETER	— 18"
PARCEL NUMBER WITH ACREAGE	30-023-000 6.0 AC
TRUNCATED PARCEL WITH TOTAL ACREAGE AND ACREAGE WITHIN DISTRICT	30-023-000 6.0 AC (0.2 AC)

NOTE
TILE LOCATIONS WERE NOT FIELD LOCATED. THE TILE LOCATIONS, AS SHOWN, WERE IMPORTED FROM THE EXISTING FARM DRAINAGE MAP.



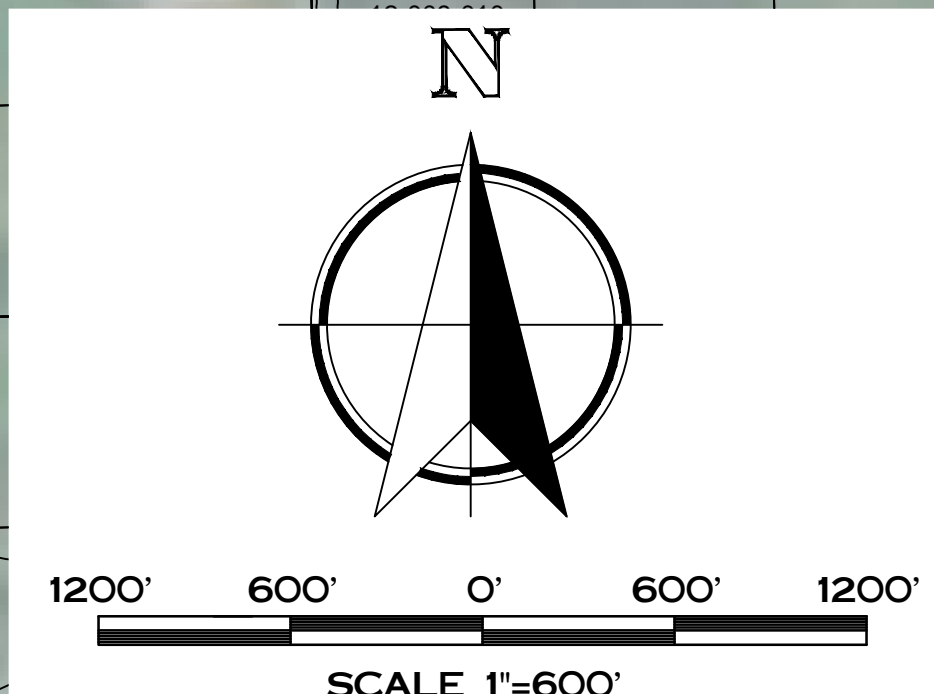
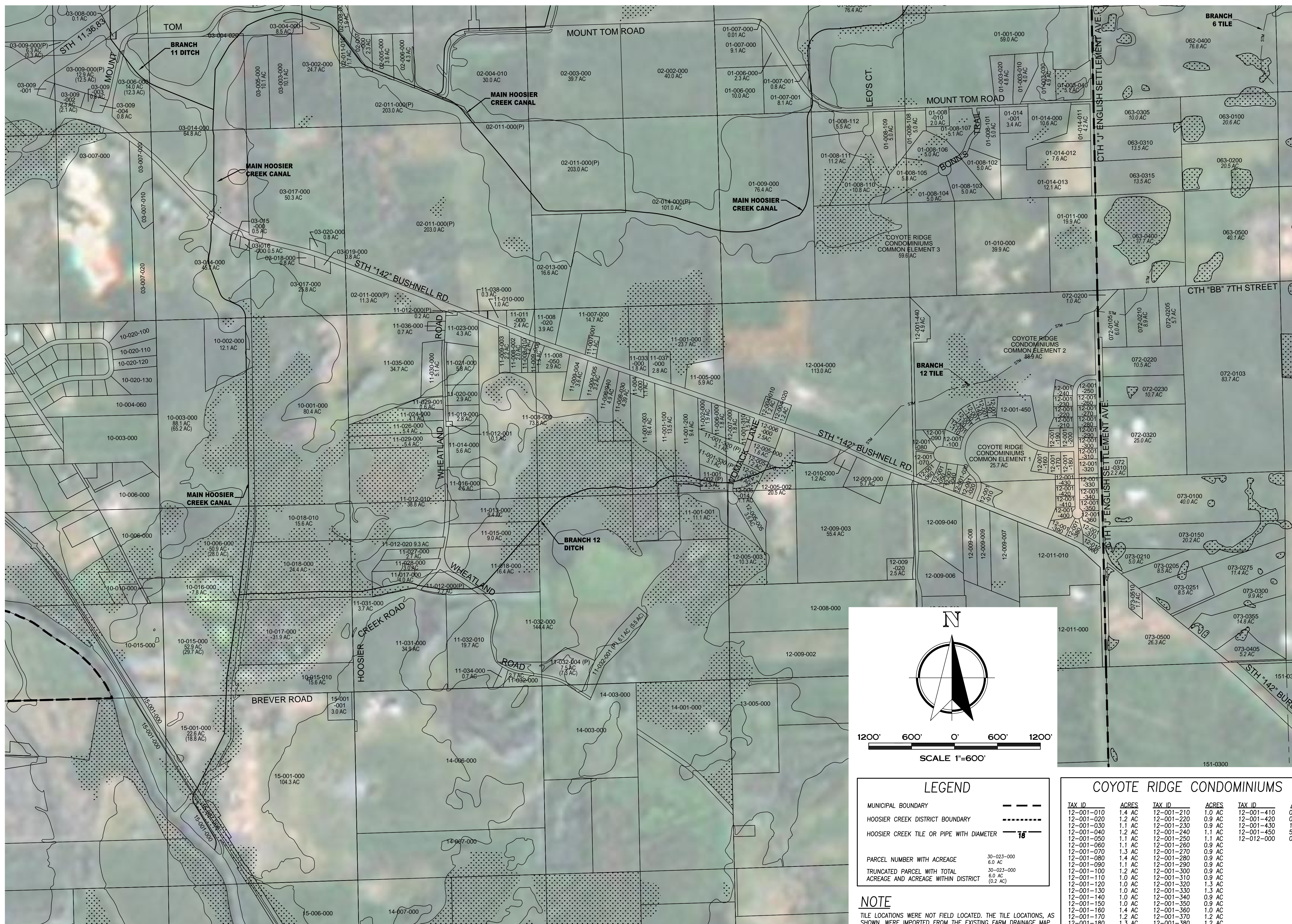
Nielsen Madsen & Barber S.C.
Civil Engineers and Land Surveyors
1458 Horizon Boulevard, Suite 200, Racine, WI 53406
Tele: (262)634-5588 Fax: (262)634-5024
Website www.nmbasc.net

**RACINE COUNTY BOARD OF
DRAINAGE COMMISSIONERS
HOOSIER CREEK DRAINAGE
DISTRICT (FARM NO. 5)
SOUTHEAST DISTRICT QUARTER**

NO.	REVISION	BY	DATE

PROJ. MGR: MRM
DRAFTED: ICB
DATE: 2-28-2012
CHECKED: ---
DATE: ---

**RACINE COUNTY BOARD OF
DRAINAGE COMMISSIONERS
HOOSIER CREEK DRAINAGE
DISTRICT (FARM NO. 5)
SOUTHWEST DISTRICT QUARTER**



LEGEND

MUNICIPAL BOUNDARY	---
HOOSIER CREEK DISTRICT BOUNDARY	-----
HOOSIER CREEK TILE OR PIPE WITH DIAMETER	--- 16 ---
PARCEL NUMBER WITH ACREAGE	30-023-000 6.0 AC
TRUNCATED PARCEL WITH TOTAL ACREAGE AND ACREAGE WITHIN DISTRICT	30-023-000 6.0 AC (0.2 AC)

NOTE
TILE LOCATIONS WERE NOT FIELD LOCATED. THE TILE LOCATIONS, AS SHOWN, WERE IMPORTED FROM THE EXISTING FARM DRAINAGE MAP.

COYOTE RIDGE CONDOMINIUMS

TAX ID	ACRES	TAX ID	ACRES	TAX ID	ACRES
12-001-010	1.4 AC	12-001-210	1.0 AC	12-001-410	0.9 AC
12-001-020	1.2 AC	12-001-220	0.9 AC	12-001-420	0.9 AC
12-001-030	1.1 AC	12-001-230	0.9 AC	12-001-430	1.0 AC
12-001-040	1.2 AC	12-001-240	1.1 AC	12-001-440	5.0 AC
12-001-050	1.1 AC	12-001-250	1.1 AC	12-012-000	0.7 AC
12-001-060	1.1 AC	12-001-260	0.9 AC		
12-001-070	1.3 AC	12-001-270	0.9 AC		
12-001-080	1.4 AC	12-001-280	0.9 AC		
12-001-090	1.1 AC	12-001-290	0.9 AC		
12-001-100	1.2 AC	12-001-300	0.9 AC		
12-001-110	1.0 AC	12-001-310	0.9 AC		
12-001-120	1.0 AC	12-001-320	1.3 AC		
12-001-130	1.0 AC	12-001-330	1.3 AC		
12-001-140	1.0 AC	12-001-340	0.9 AC		
12-001-150	1.0 AC	12-001-350	0.9 AC		
12-001-160	1.4 AC	12-001-360	1.0 AC		
12-001-170	1.2 AC	12-001-370	1.2 AC		
12-001-180	1.3 AC	12-001-380	1.2 AC		
12-001-190	1.0 AC	12-001-390	1.4 AC		
12-001-200	1.1 AC	12-001-400	1.0 AC		

NO.	REVISION	DATE

PROJ. MGR: MRM
DRAFTED: ICB
DATE: 2-28-2012
CHECKED: ---
DATE: ---